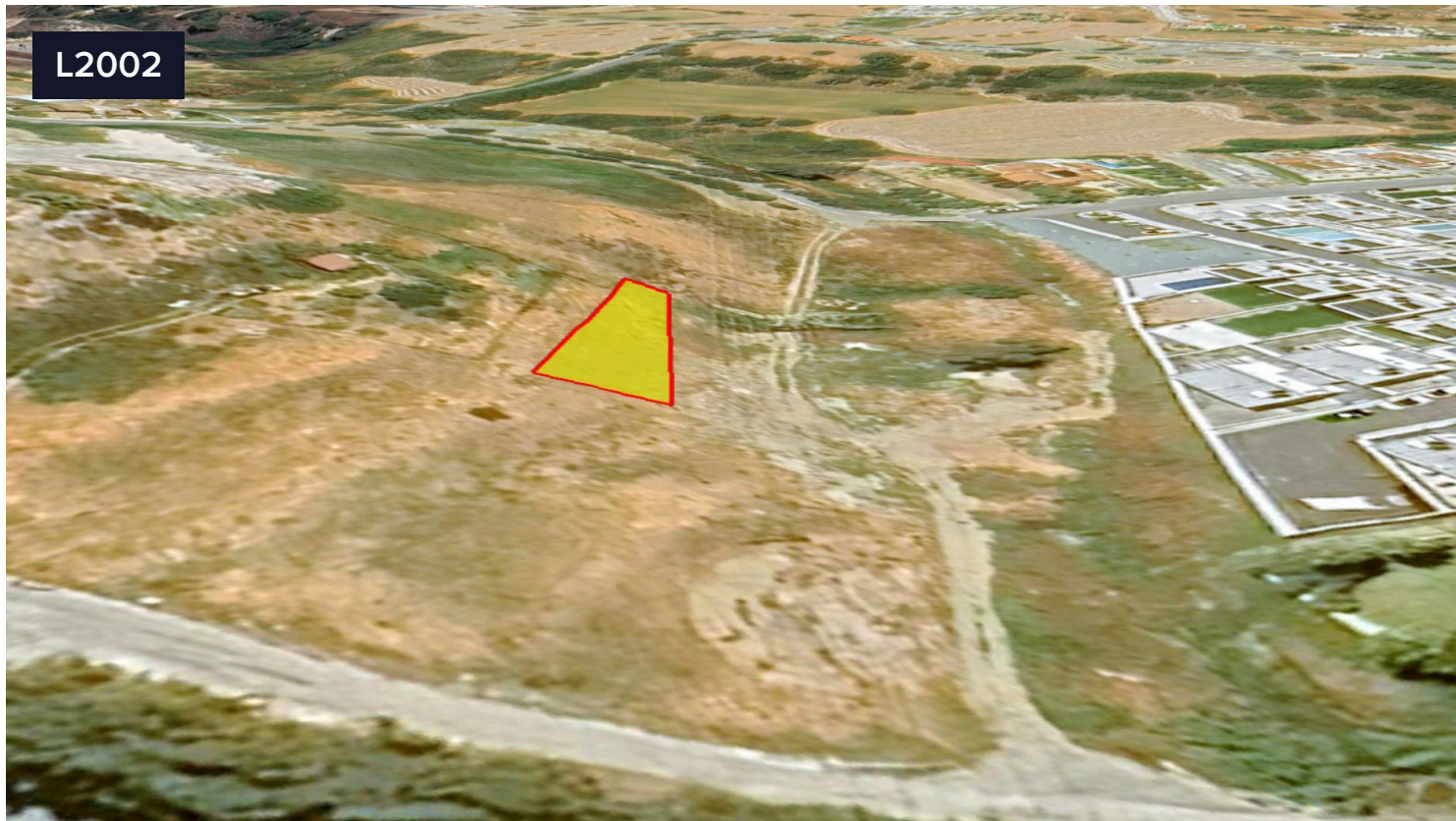


L2002



## Residential parcel close to Moni community centre €20,000

Land parcel 288 m<sup>2</sup>, only 180 m from Moni community centre, 100% in residential planning zone H3 with building factor 60%, cover factor 35%, max. 2 floors, max height 8.3 m. The land currently has no access to public road (enclosed).

Area


 288 m<sup>2</sup>

**Nextmove**



**Petros Mavropoulos**

 (+357) 96114116

 [crm@nextmove.cy](mailto:crm@nextmove.cy)

