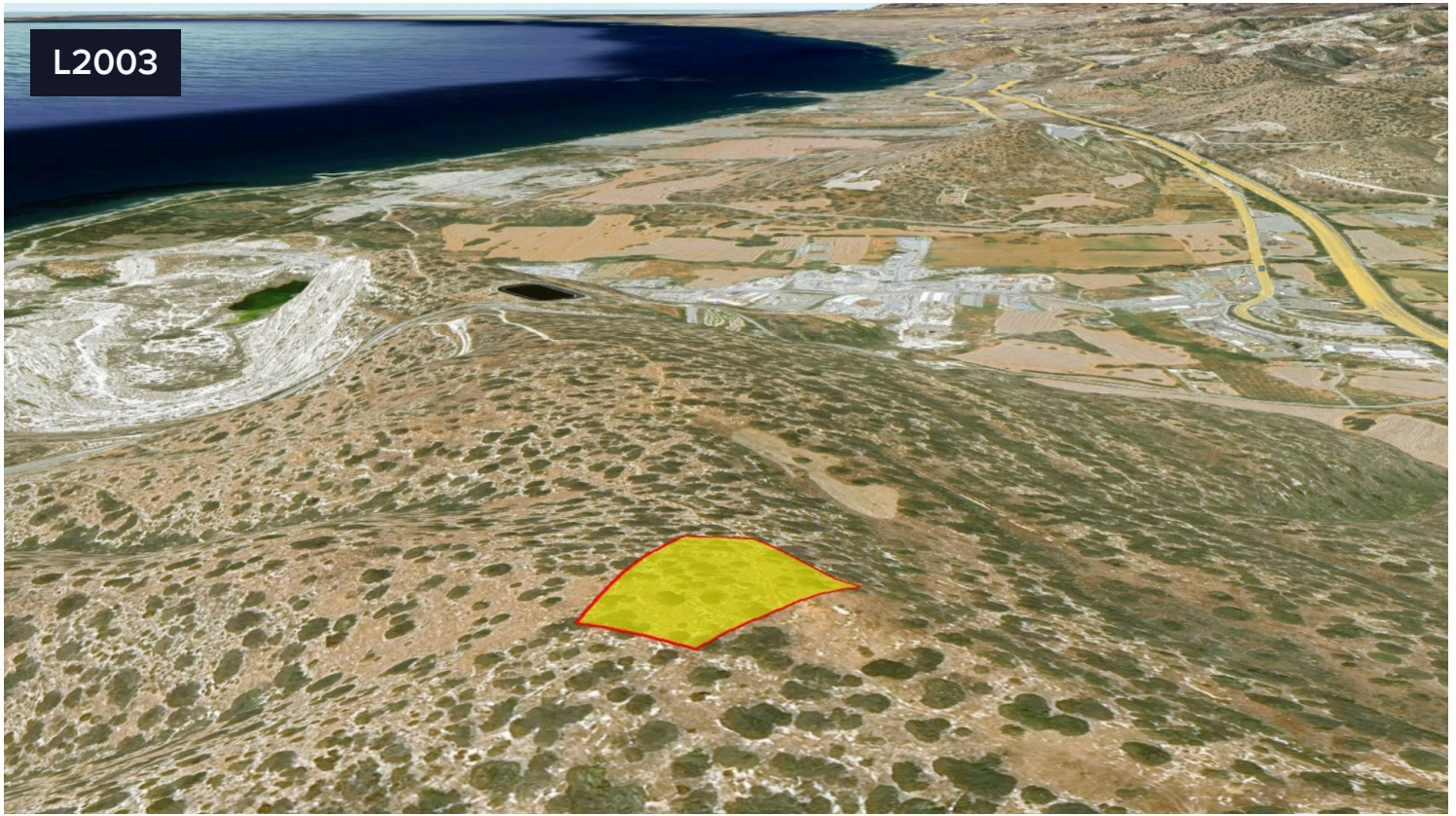


L2003



## Hilltop land with panoramic sea view

**€75,000**

Land parcel 3,847 m<sup>2</sup>, on the top of “Gerontas” hill, in Moni community, at an elevation of 170m, is available for sale.

The plot resides in agricultural planning zone (Γα4 - building factor 10%, coverage 10%, max. 2 floors, max height 7 m).

This unique position offers an absolutely unobstructed, panoramic sea view, stretching across the entire east Limassol beachfront and coastline.

The land currently has no access to public road (enclosed).


Area


**3847 m<sup>2</sup>**

**Nextmove**



**Petros Mavropoulos**

 (+357) 96114116

 [crm@nextmove.cy](mailto:crm@nextmove.cy)

